

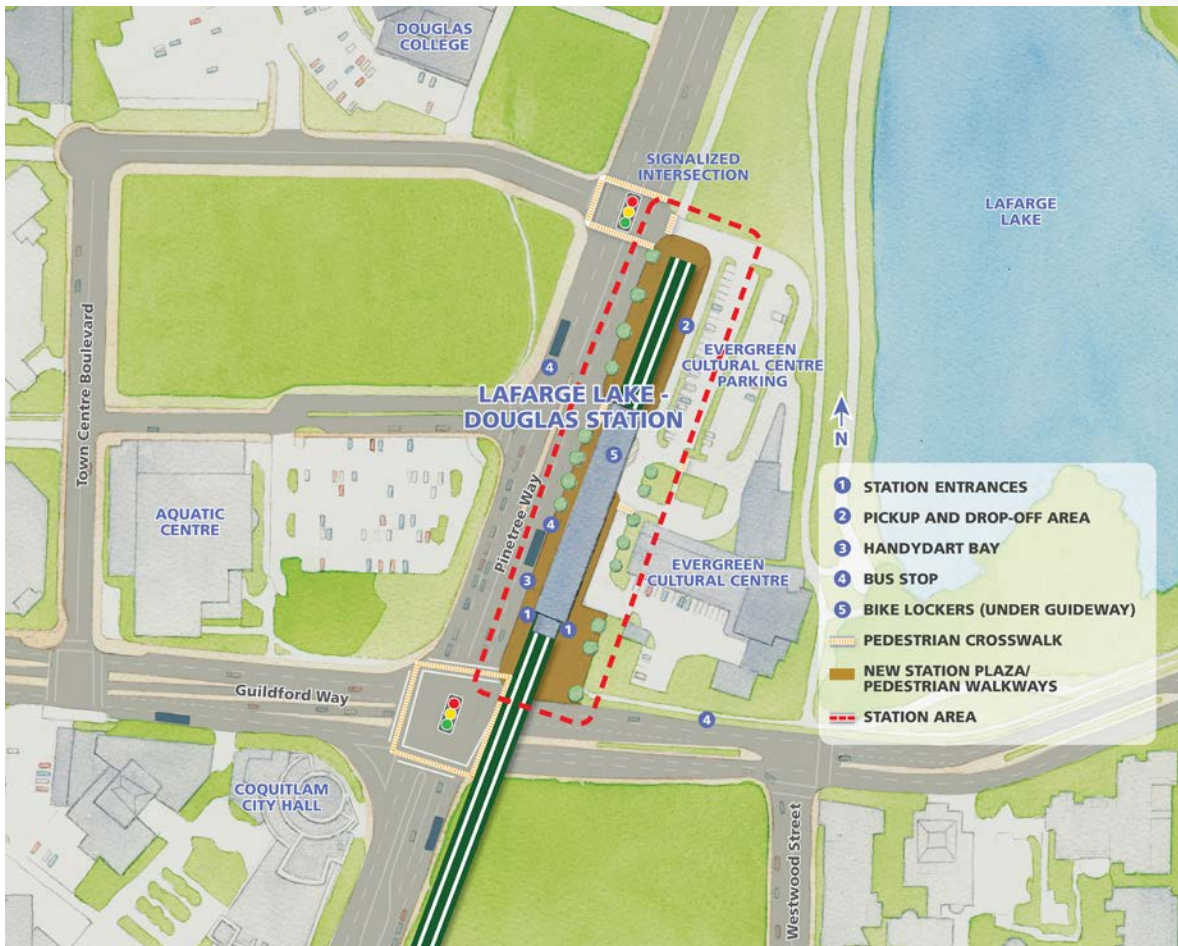


STATION UPDATES

Lafarge Lake – Douglas Station

Lafarge Lake – Douglas Station is in Coquitlam’s civic centre and will serve the growing population of residents who live nearby, in addition to city hall, the nearby cultural and recreational facilities and the students and staff at Douglas College.

The station is located south of Town Centre Park, directly adjacent to the Evergreen Cultural Centre, at the northeast corner of the Pinetree Way and Guildford Way intersection. The upturned roof at the north end of the station maximizes views to Lafarge Lake, while the tiered entrance complements the design of the Evergreen Cultural Centre. The Evergreen Line Project is working with the City of Coquitlam to incorporate the local area plan features into the station plaza area, creating an integrated look and feel.



Site context plan for completed Lafarge Lake – Douglas Station

Lafarge Lake – Douglas Station will be served by on-street bus stops along Pinetree Way and Guildford Way. Cyclists will be able to store their bikes at bike lockers and racks in the station plaza area. There will also be a passenger pick-up and drop-off area just north of the station.

The pedestrian entrance will be at the south end of the station, taking advantage of existing pedestrian crossings at the intersection of Pinetree Way and Guildford Way. A new pedestrian-activated signalized intersection at Town Centre Boulevard will provide improved access to Douglas College. Passengers will access and exit the station's centre platform area by stairs, elevators or up and down escalators.

What is the Evergreen Line?

The Evergreen Line project is an 11-kilometre extension to the existing SkyTrain system in Metro Vancouver. It will be a fast, frequent and convenient SkyTrain service, connecting Coquitlam City Centre through Port Moody to Lougheed Town Centre in approximately 15 minutes. It will connect without transfer to the current SkyTrain network at Lougheed Town Centre Station and will integrate with regional bus and West Coast Express networks. When the line opens, Metro Vancouver's SkyTrain system will become the longest fully automated rapid transit system in the world.



Lafarge Lake – Douglas Station

TRAFFIC INFORMATION

Every effort will be made to minimize disruption and maintain access during construction of the Evergreen Line. If you have questions or concerns, please call:

Traffic Information Line

604-927-2080

AVAILABLE 24 HOURS A DAY /
7 DAYS A WEEK



Canada



If you would like to learn more about the Evergreen Line Project or have your name added to the information email subscription list, please visit the Project Office (2900 Barnet Highway, Coquitlam) weekdays from 8:30 am to 4:30 pm or contact us:

Email: info@evergreenline.gov.bc.ca

Phone: 604-927-4452

Website: www.evergreenline.gov.bc.ca



@TranBC



www.facebook.com/evergreenline