



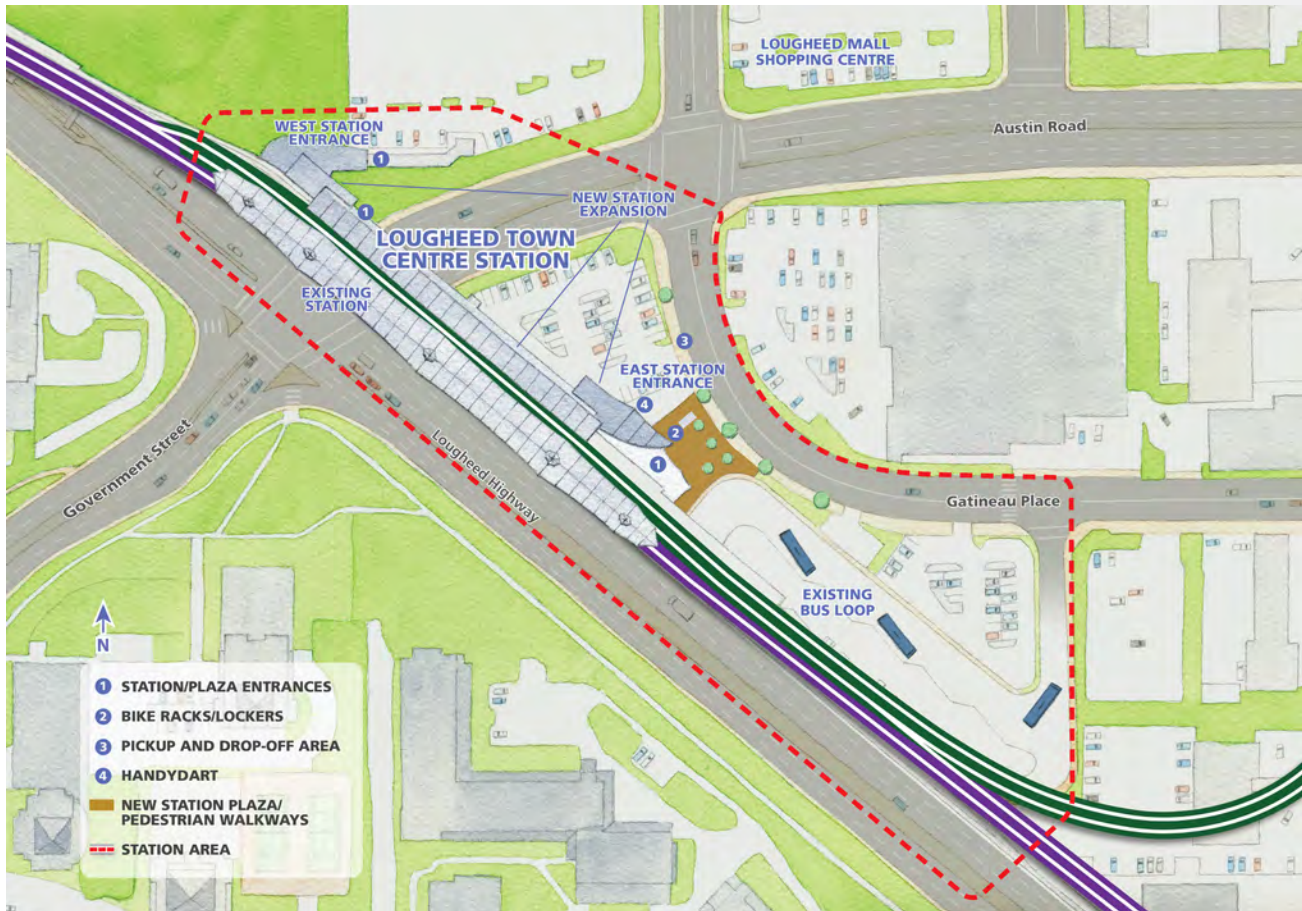
STATION UPDATES

# Lougheed Town Centre Station

Lougheed Town Centre Station is where the Evergreen Line integrates with the existing SkyTrain network. The station has been upgraded to accommodate a third platform.

The station is located at the north side of Lougheed Highway at Austin Avenue and serves high-rise residential developments, hotels, businesses and the Lougheed Town Centre Mall.

When construction is complete, station access will be through three entrances – two located west of Austin Avenue providing access to Lougheed Town Centre Mall and Government Street, and one on the east side of the station with a short walk to the bus loop facilitating easy connections with other areas of the Burnaby, the Tri-Cities and Metro Vancouver.



Site context plan for completed Lougheed Town Centre Station

The HandyDART service will have a dedicated spot just to the west of the station entrance plaza to pick up and drop off passengers. For the convenience of cyclists, bike and locker and racks located at the station's east entrance will be retained and the existing passenger pickup and drop-off spaces along the south side of Gatineau Place will remain in place.

### ***What is the Evergreen Line?***

The Evergreen Line project is an 11-kilometre extension to the existing SkyTrain system in Metro Vancouver. It will be a fast, frequent and convenient SkyTrain service, connecting Coquitlam City Centre through Port Moody to Lougheed Town Centre in approximately 15 minutes. It will connect without transfer to the current SkyTrain network at Lougheed Town Centre Station and will integrate with regional bus and West Coast Express networks. When the line opens, Metro Vancouver's SkyTrain system will become the longest fully automated rapid transit system in the world.



*Lougheed Town Centre Station*

### **TRAFFIC INFORMATION**

Every effort will be made to minimize disruption and maintain access during construction of the Evergreen Line. If you have questions or concerns, please call:

Traffic Information Line

**604-927-2080**

AVAILABLE 24 HOURS A DAY /  
7 DAYS A WEEK



Canada



If you would like to learn more about the Evergreen Line Project or have your name added to the information email subscription list, please visit the Project Office (2900 Barnet Highway, Coquitlam) weekdays from 8:30 am to 4:30 pm or contact us:

Email: [info@evergreenline.gov.bc.ca](mailto:info@evergreenline.gov.bc.ca)

Phone: 604-927-4452

Website: [www.evergreenline.gov.bc.ca](http://www.evergreenline.gov.bc.ca)



@TranBC



[www.facebook.com/evergreenline](http://www.facebook.com/evergreenline)